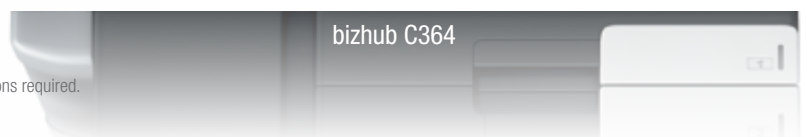


ADVANCED COLOR DOCUMENT SOLUTIONS TO

Your workload is growing – and new business opportunities won't wait. With the bizhub C364/C284/C224, you'll have the document power your office has been missing: fast output speed, superior color, flexible scanning, auto finishing and high-tech innovations to lower your costs while protecting the environment. INFO-Palette design places new dimensions of business information at your fingertips – including downloadable apps* to expand your horizons and boost your productivity – with a “touch and swipe” interface that's smooth, simple and intuitive.

With three models to choose from the bizhub C364 series can provide the right document solution for any size business.



*Not available at time of launch. Options required.

The innovative interface of INFO-Palette design.

The first thing you'll notice about your bizhub C364/C284/C224 is its broad white design stripe, highlighting a revolutionary control panel with the same intuitive "touch & swipe" feel of today's advanced mobile devices.

A big, bright 9" color screen opens a new window on your workflow, with next-generation functions like pop-up menus and scrolling function keys. You can customize command icons to speed your work – changing their position or even deleting the ones you rarely use. Hard keys provide touch-sensitive control, with the option to add an external keyboard for more flexible command input. A free-position tilt adjustment from 23° to 55° adds the extra accessibility you need for Section 508 compliance. Amber, blue and white LEDs are easier for the vision-impaired to see. There's even an optional Voice Guidance system to provide audible control instructions.

Enhanced screen resolution is a big advantage for previewing color documents before you print. And with bizhub MarketPlace, you'll also have on-screen access to downloadable applications* – helping you to maximize productivity and streamline workflow.

A right-size bizhub for every business need.

Today's challenging business environment demands a document solution with higher value – one that matches your needs, boosts your output speed and improves your image without raising your costs. Choose from a range of print/copy speeds in both color and B&W of 36 ppm (bizhub C364), 28 ppm (bizhub C284) and 22 ppm (bizhub C224), giving you right-size productivity to match the workflow of your office and application.

Scanning speed is even higher for all three models: up to 80 originals per minute, with a DF-624 Auto Reversing Document Feeder option. But that's only half the story. All three models accept an optional DF-701 Dual Scan Document Feeder that enables you to scan both sides of the page in a single pass, doubling your scanning capability to 160 originals per minute. That's a first in this product category – and a real advantage for bringing large amounts of information into your workflow quickly.

Faster output gives you greater power to produce high-quality color prints and copies with no compromise in productivity, making this bizhub series an ideal replacement for legacy monochrome devices. Reports, presentations, marketing materials and direct mailings in full color help you communicate more effectively. True 1200 x 1200 dpi printing reproduces charts and graphics, photos and corporate colors with vivid accuracy.

The bizhub C364/C284/C224 also save you money by producing customized, full-color content in-house and on-demand at a fraction of the cost of outsourcing. Tab printing allows you to create section dividers for training and human resource binders. Special features provide superior performance for today's specialized healthcare, legal and educational applications – including seamless integration with industry-standard software and enhanced security to protect sensitive patient, client and student information.

Higher quality, lower cost – and stronger environmental protection.

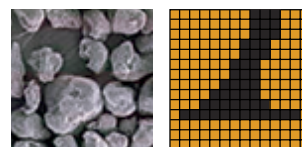
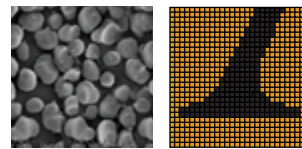
The bizhub C364/C284/C224 represent a new generation of Konica Minolta document solutions, redesigned to incorporate our latest advances in environmental protection.

The newest generation of Konica Minolta's exclusive Simitri® HD toner formulation uses biomass plant-based materials to reduce environmental impact and fuses to paper at lower temperatures to reduce power consumption. In fact, all three models consume less power – among one of the lowest power consumption rates in their class, even lower than the standards specified by Energy Star certification. Energy-saving modes include an Optimize Power Consumption mode that automatically sets correct on/off/standby status for workdays, weekends and holidays.

To keep you aware of environmental impact, the control panel features an Eco-indicator screen that allows you to monitor paper, toner and energy usage by device, account or end-user. A Print Preview Driver lets you preview documents before you print, reducing the need to print, check and reprint. Blank page removal during scanning or copying saves more paper. Energy-efficient LED lamps for low-cost scanning and extensive use of recycled materials in construction give these bizhub models an even smaller environmental footprint.

Our Clean Planet program also provides cost-free recycling for all Konica Minolta consumables, including toner cartridges and bottles, imaging units, developer and drums – with prepaid shipping labels and cost-free packaging. And our Eco Vision 2050 project is committed to reducing CO₂ emissions by 80% over 2005 levels, minimizing greenhouse gases that may contribute to global warming.

Konica Minolta's exclusive Simitri HD toner formulation uses smaller and more consistent particles to reproduce images with greater detail and sharper more legible text at true 1200 dpi resolution.



With the power of bizhub at the center of your business, you'll have a fast, flexible system for document printing, scanning and distribution. Advanced bizhub features speed your output, lower your print costs and move more information in more directions with greater ease. You'll have full functionality right from the start, with built-in print control and the power to take advantage of the latest print utilities and Cloud services. And scalable finishing options make it easy to create high-quality color documents in-house and on-demand – saving time and money while producing more professional-looking results.

Scanning speed to move information in any direction.

In addition to the optional single-pass Dual Scan document feeder that can handle up to 160 originals per minute, the bizhub C364/C284/C224 incorporate added functionality and flexibility to help you scan, save and share information within your workplace and to outside locations, vendors and mobile professionals.

Scan-to-PowerPoint lets you convert hard-copy documents to PowerPoint files easily and automatically. Scan to PDF/A and Linearized PDF capabilities optimize documents for display or archiving. You can scan to email, FTP, SMB and perform TWAIN scanning using simple command icons on your bizhub touch-screen panel. You can also scan directly to convenient User Boxes for individuals, departments, workgroups and projects.

Scan-to-Me and Scan-to-Home capabilities let you move documents quickly to secure locations. Distributed Scan compatibility with Windows 7 Servers lets you automate the process by sending documents directly to a "Scan Server" set up to follow your instructions. Using PageScope Mobile software, you can even send scanned data to mobile devices for use on business trips or in the field.

Blank page removal saves paper by eliminating blank pages during scanning – and you'll have real-time preview of scanned images, so there's no guesswork about the files being sent.

Finishing options for in-house color printing.

With modular finishing options, the bizhub C364/C284/C224 allow you to customize a document solution that's ideal for your application – producing color and B&W reports, presentations, case files, newsletters, records and marketing or training materials in-house and on-demand, without losing time, money or confidentiality.

The compact FS-534 Staple Finisher performs 50-sheet multi-position stapling, with an add-on SD-511 Saddle-Stitch Unit that produces 80-page booklets with support for tri-fold sheets – a first in this product class. Crisp creases in booklets and tri-fold sheets improve the look of your finished product. The FS-534 also accepts an optional PK-520 2/3 Hole Punch Kit.

The FS-533 Internal Finisher gives you a second finishing option for right-size scalability, providing corner stapling or 2-position stapling. Add the optional PK-519 Punch Kit for 2/3-hole punching. And the JS-506 Job Separator Tray option helps you sort prints, copies or faxes more easily.

Powerful productivity in any network environment.

Konica Minolta's exclusive Emperon® print system is built in, giving the bizhub C364/C284/C224 immediate PCL6/PS3 emulation and native XPS functionality. With the universal printer driver, you can manage your printing using standard familiar commands – even first-time users and temps can be productive right from the start.

Microsoft Office Open XML support lets you perform fast drag-and-drop printing of the latest Microsoft Office files, including docx, xlsx, and pptx. You can print and save to/from flash memory devices using a convenient USB connector on your bizhub. You can also take advantage of new Cloud-services-based applications* from the bizhub Marketplace for fast, flexible document storage and retrieval from any location: Google, SharePoint, etc.

Built-in PostScript 3 emulation features a more versatile ICC profile for specialized or detailed color settings. The PostScript driver includes Auto Trapping and Black Overprint modes. Sophisticated color conversion imaging and a scanner with enhanced dynamic range enable your prints and copies to capture more consistent dark colors and light greens.

Innovative print functions to do more – and do it faster.

The bizhub C364/C284/C224 also incorporate many of our latest printing innovations to speed your workflow. Warm-up in less than 20 seconds and first-copy output in 7 seconds or less helps you start work more quickly. Fast internal processing keeps print jobs moving even when they include highly detailed color graphics and halftone images.

Proof Copy/Print lets you run off a quick test page so you can check your settings before starting your entire print run. Carbon Copy printing saves time by outputting the same data continuously from multiple paper trays in different paper weights or colors – for example, white for immediate distribution, yellow for forwarding, green for filing.

The bizhub C364/C284/C224 can also accommodate a wider array of media sizes and weights, with support ranging from thin 14 lb. bond paper (52 gsm) to thick 100 lb. cover stock (300 gsm). You'll be able to print 11" x 17" full-bleed originals on 12" x 18" paper to preserve margins and crop-marks. Tab Printing support lets you print tabbed pages from the multiple bypass tray – even use interleave function to insert tabs into healthcare records, legal case files, student information binders, human resource packets or training manuals.

Two standard paper drawers and a 150-sheet multiple bypass tray can be augmented by a Paper Feed Cabinet to raise maximum paper capacity to 3,650 sheets – enough to handle document traffic on busy days with less reloading. You'll have standard 100% duplex productivity at rated engine speed, producing two-sided prints and copies without the need to re-insert originals.

*Not available at time of launch. Options required.

In today's fast-moving world, opportunities won't wait – so Konica Minolta makes it easy to customize a document system that speeds your workflow, fits your budget and keeps you a step ahead of emerging business needs. You'll have a wide array of functions, options and enhancements to choose from: downloadable apps* to boost your productivity, high-speed fax for all-in-one functionality, i-Option kits for the special features you need, and seamless integration with 3rd-party business software – including variable-data mailing, account tracking, cost recovery, and industry-standard programs for healthcare, education, law and other specialized applications.

Apps* & i-Options: a new approach to all-in-one productivity.

A color document solution with on-screen apps? That's one of the revolutionary advantages of the bizhub C364/C284/C224 series. With IWS, you have direct access to downloadable apps* from the bizhub MarketPlace. You can display a corporate announcement, access a library of forms/templates, check on the status of your MFP's security settings, view and print Google documents and emails as well as SharePoint documents, scan to both Google and SharePoint, order Clean Planet recycling boxes, print Clean Planet shipping labels, and much more – all without ever leaving the MFP.

You can also choose from an array of i-Option kits that add specialized functions to your bizhub MFP: LK-101 v3 for web-browser support, LK-102 v3 for PDF/A, Linearized PDF and AES 128-bit PDF encryption support, LK-104 v3 for Voice Guidance operation, LK-105 v3 to create searchable PDF files, and LK-106, 107 and 108 to provide support for Bar Code Font, Unicode Font and OCR Font printing.

Biometric Authentication, HID Proximity Cards, and other powerful options guard your bizhub from unauthorized use.

Optional IC-414 Fiery Image Controller.

For graphics-intensive applications and light production printing needs, the bizhub C364 and bizhub C284 also accept an optional IC-414 Fiery Image Controller to manage color printing, color matching and advanced print queue control. The IC-414 incorporates standard EFI Command Workstation functionality, Fiery Remote Scan, and EFI WebTools. Standard Fiery VUE software helps you orchestrate all elements into a professional high-impact result – and you'll be able to handle specific Pantone color requirements, manage print queues more effectively, and fine-tune color output to suit the needs of any job.

Fiery Graphic Arts Options also include Auto Trapping, Hot Folder printing with embedded job ticket settings, job setup with finishing options and imposition attributes for drag-and-drop printing. An optional Color Profiler suite allows you to create customized ICC profiles with CMYK devices.



The innovative IC-414 Fiery Image Controller offers advanced color capabilities and productivity-boosting tools for office workgroups.

Seamless integration of PageScope and 3rd-party software.

Konica Minolta's bizhub Extended Software Technology (bEST) makes the bizhub C364/C284/C224 ideal for software programs from 3rd-party developers – with bizhub Open API design to enable direct keyboard control of most business software.

PageScope Enterprise Suite provides a powerful set of productivity tools for server-based authentication and account tracking – including a MyPanel Manager utility to customize the interface that appears at each bizhub MFP and disappears when users log out. PageScope Web Connection gives each bizhub device its own “internal website.” PageScope Net Care Device Manager provides fast, simple IT management of multiple devices from a single point. PageScope Print Status Notifier provides automatic alerts to speed your workflow. PageScope Data Administrator™ handles addresses, passwords, and accounts with ease – and PageScope Box Operator lets you download and access scanned User Box data from your PC.

Your bizhub also allows seamless interface with a wide range of software for general business as well as specialized legal, educational and healthcare environments. For a complete list, please visit our website: <http://kmbs.konicaminolta.us>

Enhanced security to protect sensitive business data.

To meet rising demands for protecting both documents and devices, the bizhub C364/C284/C224 are designed with powerful security safeguards and systems – including an optional built-in IC card reader for fast, simple ID card authorization. All models are currently in evaluation to meet strict ISO 15408 security standards – and all accept a wide array of specialized options to fit the needs of your application, including Biometric Authentication, input for HID Proximity Cards, iClass Cards and Magnetic Stripe Cards, and CAC/PIV Card** support.

Konica Minolta's bizhub SECURE, a professional security service, provides a powerful level of lock-down protections that guard your bizhub from unauthorized operation and access.

You can initiate encrypted PDF workflow to protect information passing from PCs to networked bizhub devices. IP filtering registers IP addresses of the PCs on your network. An optional Copy Guard system can require password access to make copies. HDD Lock can apply password protection to your bizhub hard disk drive.

To protect information once stored on your bizhub hard disk drive, the Job Erase function automatically overwrites your HDD up to three times – meeting the criteria of DoD 55220.22-M (Department of Defense) and NAVSO P-5239-26 (US Navy). And when your bizhub is reassigned to another location or removed from service, HDD Sanitizing can overwrite data in eight different modes so no sensitive information is compromised.

Konica Minolta Business Solutions U.S.A., Inc., is a leader in advanced document management technologies and managed IT services. Our product line spans desktop to print shop – and your bizhub products receive superior service and support from our nationwide network of 114 Konica Minolta corporate sales offices and approximately 350 authorized dealers. With over 37,000 worldwide employees and cutting-edge research programs in optical and digital technology, we're proud of our record of achievement. In 2012, for the fifth straight year, Konica Minolta has been recognized as the #1 Brand for Customer Loyalty in the MFP Office Copier Market by Brand Keys. Our bizhub color and B&W A3 MFP line has also been named “Line of the Year” for the second year in a row by BLI (Buyer's Laboratory LLC). Konica Minolta has been listed among the Brand Keys top 100 Brand Loyalty Leaders – and we're the only copier company to be ranked among the top 100 brands.

*Not available at time of launch. Options required.

**Anticipated CAC/PIV availability Fall 2012.

SPECIFICATIONS

Type / Toner System / Print Method	Full-Color Printer/Copier/Scanner with Stationary Platen / Simitri HD Toner with Biomass / Tandem Process		
Monthly Duty Cycle (pages)	125,000	100,000	80,000
Print / Copy Speed (Letter, portrait)	Full Color & B&W: 36ppm	Full Color & B&W: 28ppm	Full Color & B&W: 22ppm
• DF-701 Dual Scanner Document Feeder	Full Color/B&W Duplex Speed: 160 opm, Full Color/B&W Simplex Speed: 80 opm, Paper Capacity: 100 Sheets, Paper Size: 5.5" x 8.5" to 11" x 17"		
• DF-624 Single Rev. Scanner Document Feeder	Full Color/B&W Duplex Speed: 37 opm, Full Color/B&W Simplex Speed: 80 opm, Paper Capacity: 100 Sheets, Paper Size: 5.5" x 8.5" to 11" x 17"		
Power Requirements / Consumption	120V 12A (60 Hz) / 1500W or less		
TEC Value	2.43 kWh	1.83 kWh	1.63 kWh
Dimensions / Weight	24.2"(W) x 27" (D) x 31" (H) / 185.18 lbs		

COPY

Warm-up Time / First Copy Time	≤ 20 sec. / Full Color: ≤ 6.9 sec., B&W: ≤ 5.3 sec.	≤ 18 sec. / Full Color: ≤ 7.7 sec., B&W: ≤ 5.9 sec.	≤ 18 sec. / Full Color: ≤ 8.3 sec., B&W: ≤ 6.9 sec.
Copy Resolution/Quantity	600 x 600 dpi / 1-9,999		
Magnification	Zoom range: 25% - 400%, 0.1% increments, Preset reduction: 78.5%, 73.3%, 64.7%, 50.0%, Preset enlargement: 121.4%, 129.4%, 154.5%, 200%		
Copy Exposure Modes	Text (legible text), Text/Photo (clear text and halftones), Photo (optimized for gradations), Map (fine edges and legible text), Dot Matrix (dot matrix or pencil originals), Copied Paper		

PRINT: Emperon Print System with bizhub Extended Solution Technology / Open API

Processor / Memory / Hard Disk Drive	1.0 GHz (MPC8536) / 2GB / 250GB (Shared with the copier)	800 MHz (MPC8536) / 2GB / 250GB (Shared with the copier)
Print Resolution / Grayscale Gradations	1800 dpi (equivalent) x 600 dpi or 1200 x 1200 dpi / 256 shades per pixel	
Page Description Language / Fonts	PCL5e/c, PCL6 (XL v.3.0) Emulation, PS3 (v.3016) Emulation, XPS v. 1.0 (XML Paper Specification) / PCL: 80 Roman fonts, PostScript 3 Emulation: 137 Roman fonts	
Operating System Compatibility	PCL6/PS3: Windows XP Home (SP1), Windows XP Professional (x32, x64), Windows Vista (x32, x64), Windows Server 2003 Standard/Enterprise (x32, x64), Windows Server 2003 Standard/Enterprise R2 (x32, x64), Windows Server 2008 Standard/Enterprise (x32, x64), Windows Server 2008 Standard/Enterprise R2; XPS: Windows Vista (x32, x64), Windows 7 (x32, x64), Windows Server 2008 Standard/Enterprise (x32, x64), Windows Server 2008 Standard/Enterprise R2; Mac (PS-PPD): OS 9.2 or later, OS X 10.2 or later, OS X 10.5 (Intel) or later / Linux: Red Hat Enterprise	
Interface	10 Base-T/100 Base-TX/1000 Base-T, USB 1.1, USB 2.0, USB Host	
Network Protocols	TCP/IP (IPv4/IPv6), BOOTP, ARP, ICMP, DHCP, DHCP v6, AutoIP, SLP, SNMP, FTP, LPR/LPD, RAW Socket, SMB, IPP, HTTP, POP, SMTP, LDAP, NTP, SSL, IPX, AppleTalk, Bonjour, NetBEUI, WebDAV, DPWS, S/MIME, iPsec, DNS, DynamicDNS, LLNMR, LLTD, SSSD, SOAP	

COPY / PRINT FUNCTIONS

Features	Account Track (1,000 accounts), Administration Mode, Auto Duplex, Auto Tray Switching, Bi-Directional Communication, Black Over Print, Card Shot, Color Modes & Functions (Auto Color/Full Color, Black & White Mode, Single Color Mode, 2-Color Mode, Color Adjustments, Copy Guard), Copy Modes (Simplex/Duplex, 2-in-1, 4-in-1, 8-in-1, Book, Booklet, Booklet + Bind), Cover Mode, Creative Functions (Mirror Image, XY Zoom, Image Center, Base Color, Neg./Pos. Reverse, Image Repeat), Encrypted Network Password Printing, Energy Save Mode, Enlarge Display, Erase (Border, Frame, Edge) Mode, Finishing (Group, Sort, Staple, Punch, Half-Fold, Tri-Fold, Center Staple and Fold), Form Overlay, Glossy Mode, HDD Encryption, HDD Job Overwrite, HDD Sanitizing, Image Adjustments (Color Matching, Pure Black Auto ON/OFF, Color Balance, Screen Settings, Image Smoothing ON/OFF), Image Preview (Job Finishing Image Display, Engine Configuration Display), Interrupt, Job List, Job Reserve, Job Skip, LDAP, Mixplex, Mix-Media, MyTab, Non-Image Area Erase, OHP Interleaving, Password Copy, Program/Recall Jobs, Paper Type Selection (Normal, Thick 1/1+, Thick 2, Thick 3, Thick 4), Print Modes (Simplex/Duplex, 2-in-1, 4-in-1, 6-in-1, 9-in-1, 16-in-1, Booklet, Booklet + Bind), Print from USB, Proof Copy, Secure Printing, Separate Scan, Tab Printing, Text Enhancement, User Authentication (Up to 20 Authentication Servers)(Synchronize w/Account Track), User Box Function, Utility (Meter Count, Environment Settings, Default Settings, One-Touch Settings, Check Consumable Life), Watermark, Zoom Selection
----------	---

SCAN

Scan Resolutions	200 dpi, 300 dpi, 400 dpi, 600 dpi
Scan File Formats / Color Modes	TIFF, PDF, Compact PDF, JPEG, XPS, Compact XPS, PPTX / Auto Color, Full Color, Black & White, 2-Color, Single Color
Scan Functions	Scan-to-Email, Scan-to-FTP, Scan-to-HDD (Scan-to-User Box), Scan-to-Me/Scan-to-Home, Scan-to-SMB (Scan-to-Desktop), Scan-to-USB, Scan-to-WebDAV, Distributed Scan Management, Network TWAIN, WS-Scan, Color Internet Fax

• FK-511 FAX KIT (OPTIONAL)

Compatibility / Compression	Super G3 compatibility, 33.6 Kbps modem speed / MH, MR, MMR, JBIG data compression
Fax Transmission Speed / Fax Memory	Less than 3 seconds per page (JBIG, standard resolution) / 2 GB (shared print, copy, scan, fax memory)
Fax Line Mode / Fax Exposure Mode	PSTN, PBX, G3 / Text, Text/Photo, Photo, Dot Matrix
Fax Functions	Autodialing (2,000 addresses), Auto Memory Reception, Auto Reduction Printing, Broadcasting (maximum 600 locations), Bulletin Board, Duplex Transmission/Reception, F-Code Support, Group Dialing (up to 500 addresses per group / up to 100 groups), Mailbox Transmission/Reception, Memory/Quick Dial, Overseas Transmission, Password Transmission/Reception, PC-Fax, IP Address Fax, Polling Transmission/Reception, Print Setting or Overnight Reception, Program Dialing (400 programs), Redial, Relay Transmission, Timer Transmission, TSI Routing
Fax Options	Spare TX-Marker Stamp 2, SP-501 Fax Stamp Unit

PAPER HANDLING

Original Size	Up to 11" x 17" (scanning/copying), Up to 11" x 17" full bleed on 12" x 18" paper (printing)
Paper Trays	Tray 1: 500-sheet (universal cassette) / 5.5" x 8.5" / 14 lb. bond to 140 lb. index Tray 2: 500-sheet (universal cassette) / 5.5" x 8.5" to 12" x 18" / 14 lb. bond to 140 lb. index Bypass Tray: 150-sheet bypass/4" x 6" to 12" x 18", 8" x 13" / Banner Paper / 16 lb. bond to 100 lb. cover up to 300 gsm
• PC-110 Paper Feed Cabinet	500-sheets / 8.5" x 11", 8.5" x 14", 11" x 17" / 14 lb. bond to 140 lb. index / Foolscap: 8.5" x 13.5", 220mm x 330mm , 8.5" x 13", 8.25" x 13", 8.12" x 13.25", 8" x 13"
• PC-210 Paper Feed Cabinet	500-sheets (x2) / 8.5" x 11", 8.5" x 14", 11" x 17" / 14 lb. bond to 140 lb. index / Foolscap: 8.5" x 13.5", 220mm x 330mm , 8.5" x 13", 8.25" x 13", 8.12" x 13.25", 8" x 13"
• PC-410 Paper Feed Cabinet	2,500-sheets / 8.5" x 11" / 14 lb. bond to 140 lb. index
Maximum Paper Capacity	3,650-sheets (total with options)

APPLICATIONS

Network & Device Management	PageScope Data Administrator, Driver Packaging Utility, HDD Back-Up Utility, Download Manager (ICC Color Profile Utility), Log Management Utility
User Tools	PageScope Web Connection, PageScope Direct Print, PageScope Box Operator, PageScope Print Status Notifier, Font Management Utility, Copy Protect Utility, Print Utility for Unix
Management Tools	bizhub vCare support
• PageScope Enterprise Suite	PageScope Account Manager, PageScope Authentication Manager, PageScope MyPrint Manager, PageScope MyPanel Manager, PageScope Net Care Device Manager (standard)

• ADDITIONAL OPTIONS

• Authentication / Security Options	AU-102 Biometric Authentication Unit, AU-201H HID Proximity Card Authentication Unit, AU-202H HID iClass Card Authentication Unit, AU-204H Magnetic Stripe Card Reader, AU-211P CAC/PIV Solution*, SC-508 Copy Guard Kit, WT-506 Working Table to support Authentication Devices, MK-735 Internal Mount Kit
• External Keyboard	KH-102 Keyboard Mount Kit, EK-606 USB Interface for External Keyboard and Voice Guidance, EK-607 USB Interface for External Keyboard, Bluetooth Support and Voice Guidance
• i-Option	LK-101 v3 i-Option, LK-102 v3 i-Option, LK-104 v3 i-Option, LK-105 v3 i-Option, LK-106 i-Option, LK-107 i-Option, LK-108 i-Option, UK-204 i-Option Memory Upgrade Kit
• Finishing	FS-534 50-Sheet Staple Finisher, PK-520 Punch Kit (FS-534), SD-511 Saddle Stitcher Kit (FS-534), FS-533 50-Sheet Inner Staple Finisher, PK-519 Punch Kit (FS-533), JS-506 Job Separator
• Others	DK-510 Copy Desk, MK-730 Banner Paper Guide, OC-511 Original Cover

• FIERY IC-414 EMBEDDED IMAGE CONTROLLER (OPTIONAL)**

Processor / Memory / Hard Disk Drive	Intel Pentium E5300 2.6 GHz / 2 GB (standard/max) / 160 GB HDD
Page Description Language / Fonts	PCL5, PCL6, Adobe PostScript 3 (version 3019) / PCL: 80 fonts, Adobe PS3: 138 fonts
Operating System Compatibility	PCL6, PS3: Windows XP (x32, x64), Windows Vista (x32, x64), Windows 7 (x32, x64), Windows Server 2003, Windows Server 2008 (x32, x64); Mac: OS X 10.4.x, Intel-based: 10.4.x (print driver), 10.5.x, 10.6.x; Unix/Linux
Interface / Protocols	10 Base-T/100 Base-TX/1000 Base-T, USB 1.1, USB 2.0 / TCP/IP, IPX/SPX, AppleTalk (EtherTalk), LPR, SMB, LPD, Network (5.x, 6.x), Pserver, Nprinter, NDPS, IPP, SMTP/POP3, LDAP, SSL/TLS, SNMP, HTTP/HTTPS, IPv6, DPWS (WSD)
Standard Software	Fiery Command Workstation, ColorWise Tools, Fiery Spot-On™, Fiery WebTools, Fiery VUE, Secure Erase
Optional Software / Hardware	Fiery Productivity Package, Hot Folders/Virtual Printers, Auto Trapping, SeeSequence Impose, SeeSequence Compose, Impose+Compose Suite, Color Profiler Suite v3.1 UV, Fiery Color Profiler Suite v3.1 (software only), ES-1000 Spectrophotometer / VI-506 Video Interface Kit for IC-414

● OPTIONAL ● STANDARD

*Anticipated availability Fall 2012
** Fiery not available for the bizhub C224

Konica Minolta Optimized Print Services offers a full suite of device output services and workflow solutions that increase efficiency and control costs. Please contact your authorized Konica Minolta sales representative for details.